

gasmet
A Nederman Company



GT5000 TERRA



GT5000 TERRA

High performance multigas analyzer with unique features

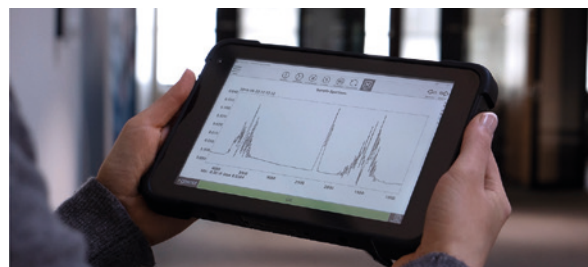
The GT5000 Terra is a **next-generation gas analyzer** combining high technology with ease of use and true robustness. This analyzer is designed specifically for demanding and active field and on-the-go use. It is lightweight and compact, meaning that it can be easily carried to the field as a backpack with minimum effort. What is more, the analyzer allows simultaneous gas measurements while on the move.

The analyzer is **IP54 rated** which proves the robustness of the instrument. The GT5000 Terra is 100% splashproof which means that a few raindrops will not disturb your outdoor field measurements. Additionally, measuring is safe and secure even in trembling circumstances.

The internal and external look and design of the analyzer are designed and built with consideration to both the ergonomic details to enable easy movement and transportation and technical requirements to secure reliable and carefree measurements even in demanding weather and outdoor conditions.

Calcmeter Easy Software is already installed in the tablet

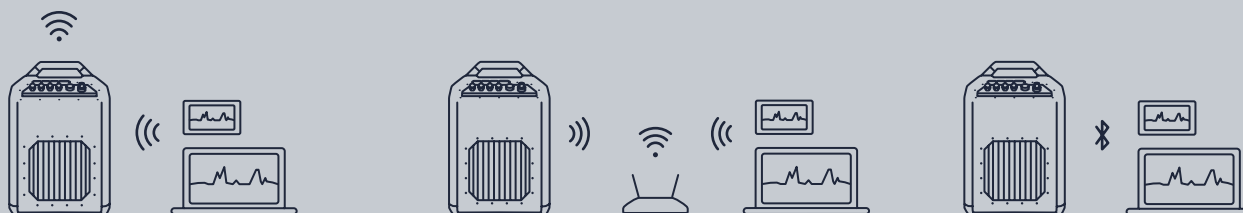
The software guarantees a great user experience. The analyzer is operated by a Windows tablet running a Calcmeter Easy software with a clear, visually-pleasing and intuitive design. Thanks to the user-friendly interface, this powerful gas analyzer does not require hours of training to master the instrument.



- + No expertise needed – step-by-step instructions guide the user
- + One-click measurements and immediate online results
- + Visual and audio concentration alarms can be defined by the user
- + Five different views show the most relevant information

High technology inside a yellow box

- + Fourier Transform Infrared spectroscopy, FTIR
- + Simultaneous measurements of up to 50 gases
- + Ability to measure 300+ gases and even wider concentration ranges than before
- + Adding new gases is easy and affordable, no hardware changes needed
- + Ability to identify unexpected gas components



Wireless connections

Wifi Access Point

- + Analyzer provides its own WiFi network to allow point-to-point connection between your PC and the analyzer – works anywhere

Wifi Station Mode

- + Analyzer and PC connected to the same WiFi network
- + Possibility for remote use – user can be located in a different country

Bluetooth

- + Connect your PC and analyzer anywhere with Bluetooth

Applications

- + Greenhouse gas fluxes from ecosystems
- + Shipping container air quality
- + Industrial hygiene and exposure monitoring
- + Anesthetic waste gas monitoring
- + Confined space monitoring
- + Hazmat and first response

GT5000 Terra can be equipped with customized equipment packages, depending on the application and the user's specific needs.

Technical superiorities – summary

- + 9.4 kg with battery / 8.0 kg without battery
- + Splashproof and IP54 rated
- + Wireless connectivity
- + Remote operability
- + Designed to resist vibrations
- + Internal battery and sample pump
- + Visually pleasing and easy-to-use software

Contact our experts for more information:
contact@gasmet.fi

Our portable products are on the frontline of the progress of the whole gas analysis field. We are known for manufacturing reliable, easy to use and cost-saving gas analysis solutions for a variety of environments. High precision measurements, reliability, and robustness characterize these top-of-the-line solutions. We have a world-leading reputation, and we take pride in making sure all our customers are supported through the lifetime of the investment.

Ready to take the next step with us?

gasmet
A Nederman Company

SERVICE PROCESS



Consultation

Customer's case is assessed and technical details clarified



Quotation

Plans are made to purchase Gasmet's solution



Agreement

Customer enters into a partnership with Gasmet



Manufacturing

Gasmet's solution is tailored to customers' needs



Delivery

Gasmet's solution is delivered to the customer



Training

Customer is trained utilize Gasmet's solution



Service & support

Customer is provided with lifetime of support

gasmet
A Nederman Company

Gasmet Technologies Oy
Mestarintie 6
01730 Vantaa, Finland

Tel. +358 9 7590 0400
contact@gasmet.fi
www.gasmet.com